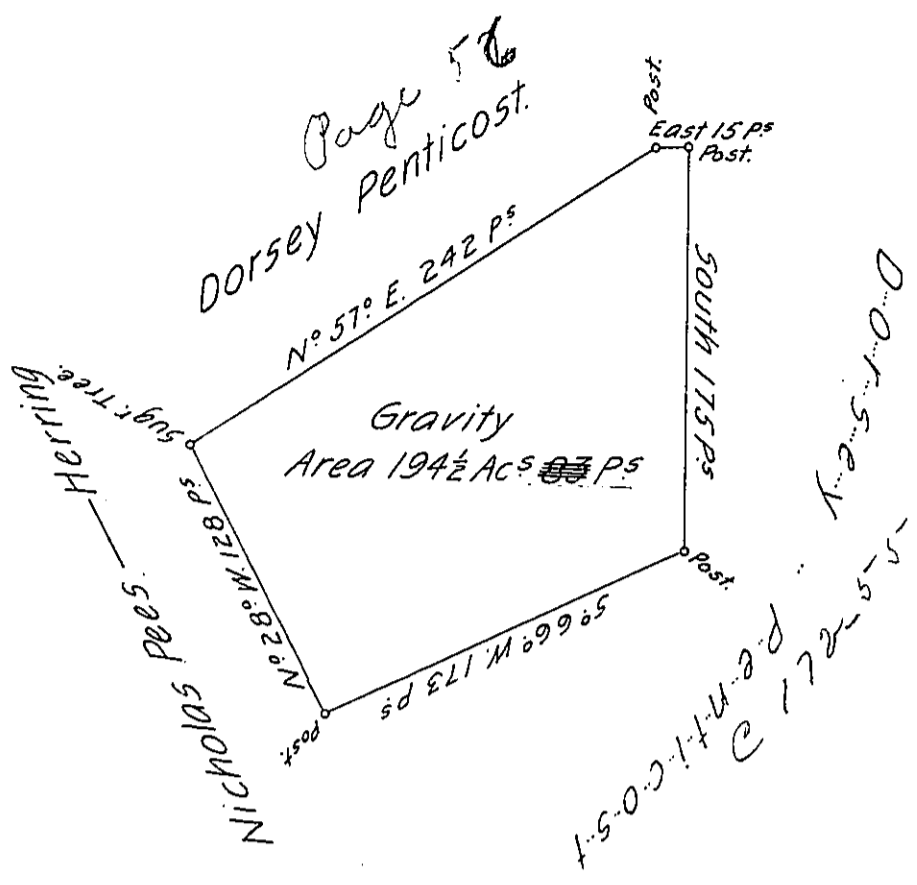


58
P10-282
1/18



A Draught of a Survey called "Gravity" - situate on Chartiers Chⁿ, in Wash-
ington County, cont^g 194 Ac^s 83 P^s, strict Measure, executed Ap^l y^e 20th 1786,
in Consequence of a Certif^e for 400 Ac^s granted to Dorsey Penticost by the
Commiss^{rs} appointed by Virg^a to adjust the Claims to unpatented Lands in the
Counties-Monong^a Yohg^a and Ohio, and entered with the County Surveyor y^e 20th
of Decem^r 1779, as appears from the List of Entries transmitted from the Sur-
veyor General's Office.

Ret^d 18th January 1787.

Presley Nevill, } D. 5^s
Matt^r Ritchie, }

John Lukens, Esq^r. S. 6!

IN TESTIMONY that the above is a copy of the original remaining on file in
the Department of Internal Affairs of Pennsylvania, made
conformably to an Act of Assembly approved the 16th day of
February, 1833, I have hereunto set my Hand and caused
the Seal of said Department to be affixed at Harrisburg,
this twenty-second day of May 1906

Geo. D. Seaman
Secretary of Internal Affairs.